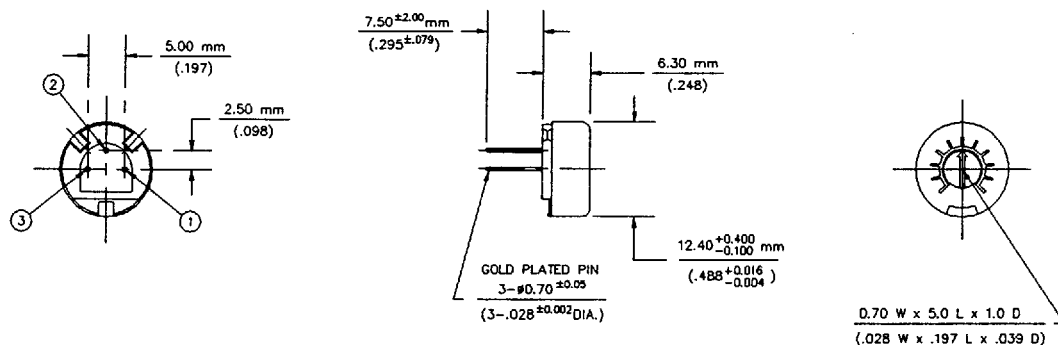




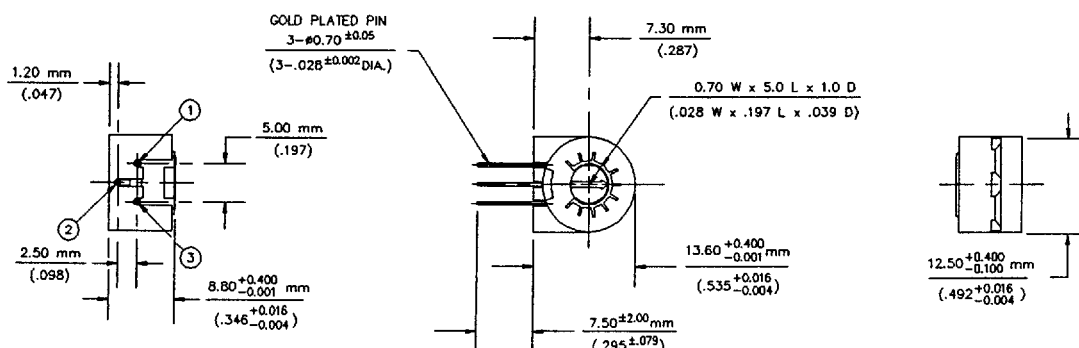
# RJ-13

Single Turn Sealed Cermet

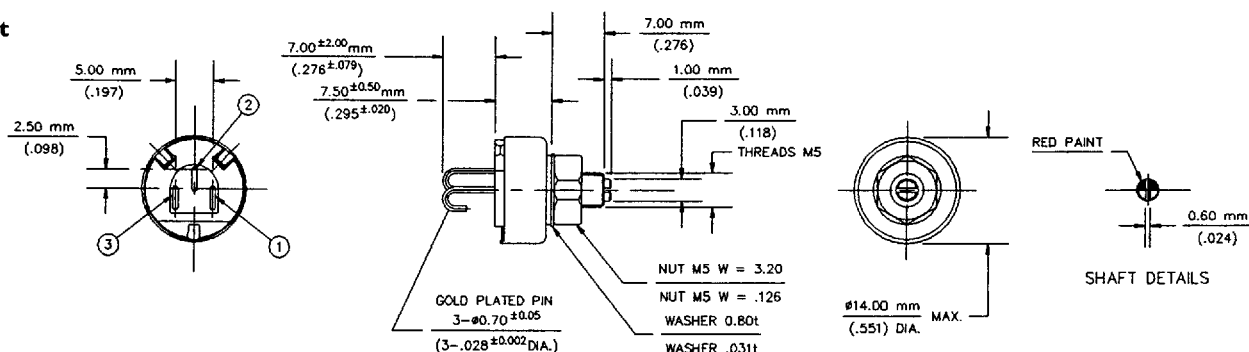
## RJ-13P Top Adjust



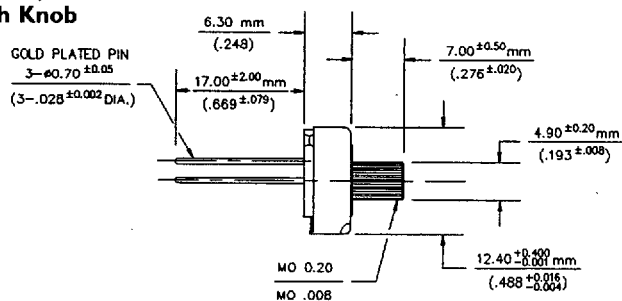
## RJ-13S Side Adjust



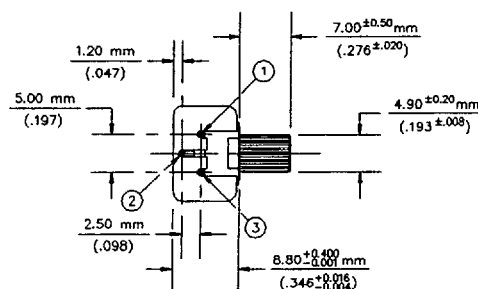
## RJ-13B Panel Mount



## RJ-13PR Top Adjust With Knob



## RJ-13SR Side Adjust With Knob



### Metric

- Dimensions are in millimeters (inches in parentheses are for reference only).
- Tolerances unless otherwise specified  $\pm 0.30$  mm ( $\pm .012$  inches).